



1/29-33 Darcy Road Road Westmead NSW

2  2  1 

Experience effortless, contemporary living in this spacious and beautifully designed apartment. Bathed in natural light, the generous living area flows seamlessly into a large private courtyard, the perfect setting for entertaining or unwinding.

Type : Apartment
Price : SPACIOUS VILLA-STYLE!
Land Size : 155 sqm
View : <https://www.neptunegroup.com.au/8684636>

Both bedrooms are generously sized, offering comfort and privacy. The master bedroom features a stylish ensuite and direct access to the courtyard, creating a private retreat. The second bedroom includes its own balcony.

Located above Coles Supermarket and just moments from parks, cafés, public transport, and medical centres, this apartment offers unbeatable lifestyle. Everything you need is right at your doorstep.

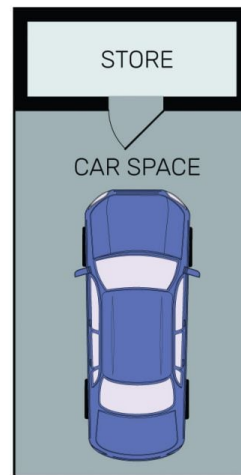
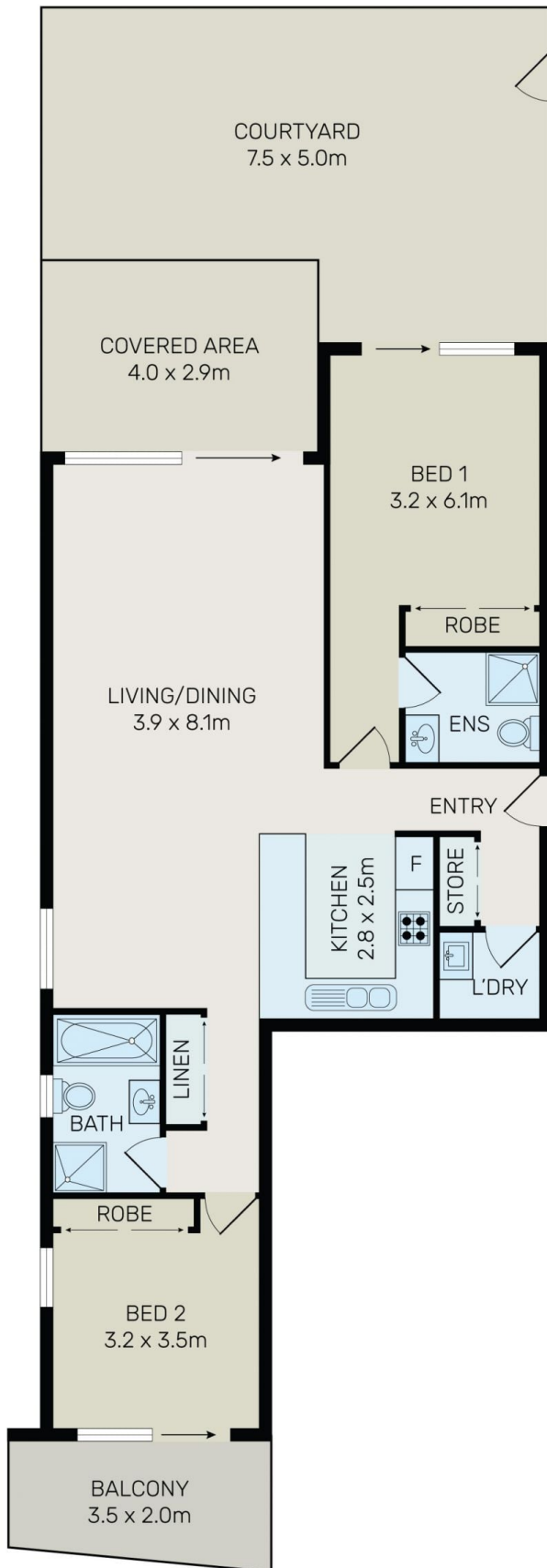


Vikas Saluja
02 8610 5777

[For full version visit the website](https://www.neptunegroup.com.au)

<https://www.neptunegroup.com.au>

Welcome to your trusted real estate partner in the heart of Sydney's vibrant Western Suburbs. We are a dedicated



All information contained herein is gathered from all sources we believe to be reliable. However we cannot guarantee its accuracy and interested parties should rely on their own enquiries.



1/29-33 Darcy Road, Westmead