






67 Toongabbie Road Toongabbie NSW

5  3  2 

This impressive double-storey home showcases a modern design and excellent presentation. Set on a large 900+ sqm block (18.29 m frontage x 50.29 m depth) in a highly convenient and sought-after part of Toongabbie, it offers space, comfort, and great future potential.

Designed for modern family living, the home features generous proportions and multiple living areas. From the formal lounge to the open-plan family and dining areas, as well as an additional living area upstairs, the layout is practical, flexible, and ideal for growing families.

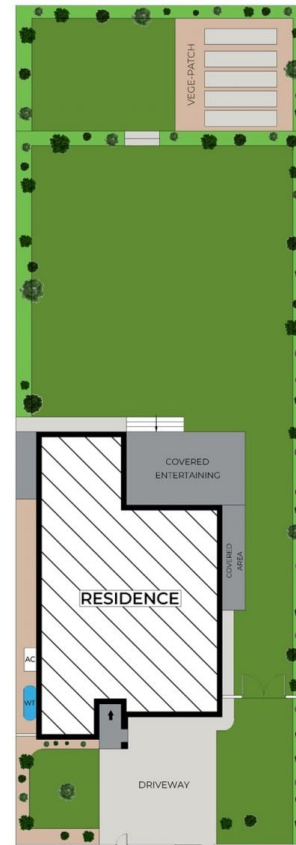
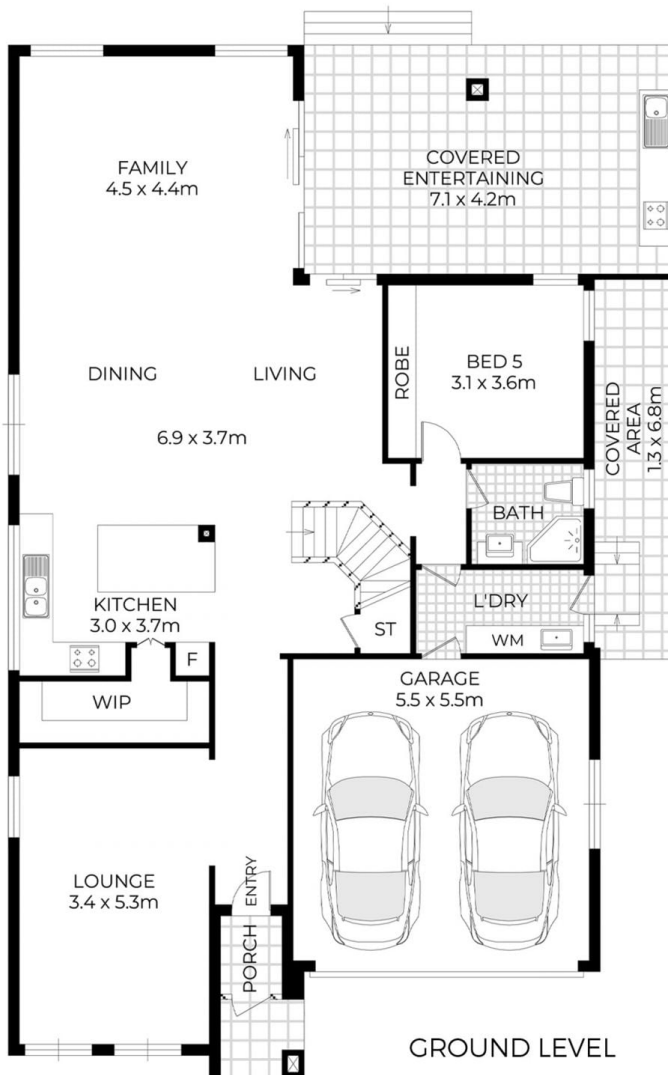
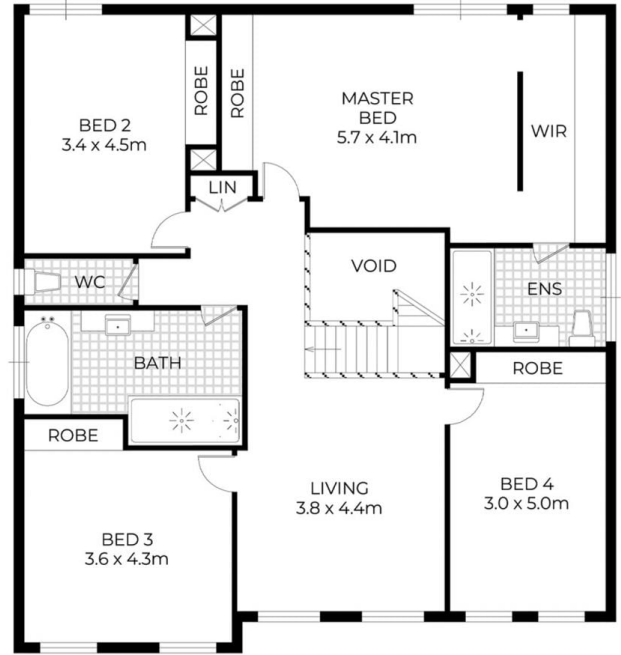
The well-designed kitchen features stone benchtops, stainless steel appliances, gas cooking, and ample storage, making it perfect for everyday cooking and entertaining.

[For full version visit the website](#)

Type : House
Price : Grand Family Home on an Expansive 900+ m2 Land
Land Size : 916.9 sqm
View : <https://www.neptunegroup.com.au/8684409>



Vikas Saluja
02 8610 5777



67 Toongabbie Road Toongabbie

DISCLAIMER

DIMENSIONS ARE APPROXIMATE AND SHOULD ONLY BE USED AS A GUIDE
 THEY ARE NOT TO SCALE AND NO LIABILITY BE ACCEPTED